

A close-up, artistic photograph of a black upholstered chair. The chair's surface is covered in a dense pattern of small, round, gold-colored studs. The lighting is dramatic, highlighting the texture of the fabric and the metallic sheen of the studs. The background is softly blurred, showing the curved backrest of the chair.

Ottini
BEYOND UPHOLSTERY



Ottiu pieces are more than their function, they are designed to become the center of attention while creating a harmonious union with the decorative elements that surround their seductive and curvy lines.

Each piece, made by specialized craftsmen, is treated like a unique work of art; from the foundation in solid wood structure to the finest details of the high-quality finishing.

Conceptually, our products materialize an accessible and comfortable escape from the cosmopolitan chaos, recreating at home a gratifying retreat. The time to enjoy the pleasures of life is so slim that leisure has become more precious than the precious metals or stones.

Each Ottiu design can be personalized to meet your needs and be even more exclusive and unique for your projects in terms of dimensions, finishes, materials and the upholstery , we are ready to please even the most demanding project.

CENTURY COLLECTION

CENTURY COLLECTION

STOOLS & BENCHES DINING CHAIRS BAR CHAIRS ARMCHAIRS TWIN SEAT CHAISE LONG SOFA



ANDY STOOL
Page 6



BETTY STOOL
Page 8



COLETTE STOOL
Page 10



AUDREY STOOL
Page 14



AUDREY BENCH
Page 15



KIM ARMCHAIR
Page 60



VISCONTI ARMCHAIR
Page 63



GODARD ARMCHAIR
Page 64



TIPPI ARMCHAIR
Page 66



ELDRED ARMCHAIR
Page 68



WINFREY BENCH
Page 16



BRIGITTE BENCH
Page 18



LOUIS DINING CHAIR
Page 20



TIPPI DINING CHAIR
Page 24



LUNA DINING CHAIR
Page 28



LOUIS ARMCHAIR
Page 70



KELLY TWIN SEAT
Page 74



LOREN CHAISE LONGUE
Page 76



CHAPLIN SOFA
Page 78



LANSBURY SOFA
Page 80



KELLY DINING CHAIR
Page 32



ANDRESS DINING CHAIR
Page 35



CARON DINING CHAIR
Page 37



KELLY BAR CHAIR
Page 38



LUNA BAR CHAIR
Page 42



JEANE SOFA
Page 84



SWANSON SOFA
Page 88



MARGRET SOFA
Page 92



HAYWORTH SOFA
Page 96



MURNAU SOFA
Page 98



LOUIS BAR CHAIR
Page 44



TIPPI BAR CHAIR
Page 47



WINFREY BAR CHAIR
Page 48



CHAPLIN ARMCHAIR
Page 50



LOREN ARMCHAIR
Page 52



MARTINE SOFA
Page 100



DOROTHY SOFA
Page 102



GARLAND ARMCHAIR
Page 55



ELLEN ARMCHAIR
Page 56



LANSBURY ARMCHAIR
Page 58



SCARLET ARMCHAIR
Page 72

CENTURY COLLECTION

STOOLS & BENCHES DINING CHAIRS BAR CHAIRS ARMCHAIRS TWIN SEAT CHAISE LONG SOFA

ANDY stool

With a warm and friendly personality, Andy stool is an artistic combination of a polished brass structure and high-quality sheepskin upholstery. This gracious union is the perfect trendy addition to the coziest corner of the house.



Dia. 42 cm 16.5" **H.** 46 cm 18.1"

CENTURY COLLECTION



BETTY stool

Betty stool is made to be the matter of conversations and an ideal choice for lounge areas. Its splendid, architectonic legs are gilded in gold leaf and its upholstery is in high-quality velvet and finished with golden piping.



Dia. 35 cm 13.7" **H.** 42 cm 16.5"

CENTURY COLLECTION





COLETTE stool

Inspired by the iconic Moulin Rouge and sumptuous burlesque style, Colette stool is a reference to elegant beauty of Bohemian spirit. Draped in sensual fabrics, its exotic and mystic energy perfectly reflects the feminine personality and gracious silhouette. Upholstered in luscious cherry velvet with a copper plated brass ring around.

Dia. 36 cm 14.1" **H.** 44 cm 17.3"

CENTURY COLLECTION



AUDREY stool

Layer upon layer of comfort is added with each cream velvet module on the Audrey stool. Golden piping articulates each of the segments and adds a glamorous highlight to Audrey.



Dia. 45 cm 17.7" **H.** 40 cm 15.7"

AUDREY bench

The memorable and intricate polished brass structure unites strength and the characteristic elegance of the golden age of Hollywood.



Dia. 120 cm 42.2" **H.** 45 cm 17.7"

WINFREY bench

The Winfrey bench has a solid and strong feminine touch. Featuring capitoné upholstery in shiny crystal velvet, this piece is embraced with a gold plated steel structure adding a special taste and synergy to any striking luxury interior project.



W. 122 cm 48" **D.** 51 cm 20" **H.** 45 cm 17.7"



BRIGITTE bench

Brigitte bench is a refined piece with luxurious lines. Its structure made in solid American walnut with a high gloss finish and nickeled accents is inspired in extravagant classic design lines. On the leather upholstery, our artisans masterfully apply the matelasse technique.



W. 112 cm 44" **D.** 42 cm 16.5" **H.** 62 cm 15.7"





LOUIS dining chair

With brown velvet and a contrasting golden piping, a classic design radiates from this chair's modern lines. The Louis dining chair rests on solid walnut legs with Ottiu's signature polished brass accents.



W. 51 cm 20.1" **D.** 52 cm 20.5" **H.** 80 cm 31.5"
SEAT H. 47 cm 18.5"

CENTURY COLLECTION



TIPPI dining chair

Our Tippi dining chair is not a discrete piece. Fresh, lively, breath-taking, it is the muse of the director. With a classic design but an audacious and bright cotton velvet and finishing touches in brass to further pump its exuberance, it will give any space a fresh and lively feel.



W. 64 cm 25.8" **D.** 58 cm 22.8" **H.** 81 cm 31.8"
SEAT H. 50 cm 19.7"

CENTURY COLLECTION





LUNA dining chair

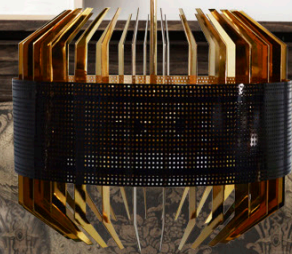
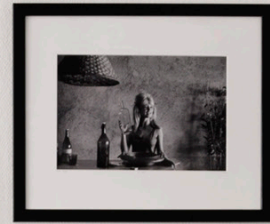
An unusual majestic elegance surrounds the Luna dining chair. The slender and curved solid walnut legs with signature brass accents join the surprising and memorable wing-shaped backrest. The extreme comfort of the chair, although absorbing, leaves center stage to the seductive feminine lines of Luna.



W. 59 cm 23.2" **D.** 52 cm 20.4" **H.** 80 cm 31.5"
SEAT H. 47 cm 18.5"

THE LUNA family





KELLY dining chair

Kelly dining chair dazzles in its smooth bordeaux velvet and long, elegant lacquered legs. The glossy black structure finished with a delicate touch of gold complements the polished brass nails adorning the contours of the gracious backrest.



W. 52 cm 20.4" **D.** 52 cm 20.4" **H.** 77 cm 30.3"
SEAT H. 48 cm 18.9"

THE KELLY family





ADDRESS dining chair

It happened one night is the inspiration movie for the Address dining chair's design. Shapely contoured in seductive and opulent form, Address dining chair is the quintessential starlet in any elegant space. Draped in hypnotic black velvet, polished brass and solid walnut.



W. 46 cm 18.1" **D.** 46 cm 18.1" **H.** 82 cm 32.2"
SEAT H. 49 cm 19.3"



CARON dining chair

Caron dining chair exhibits fascinating and romantic design. Drawing inspiration from Paris, the city of lovers, Caron will bring passion and desire to your spaces. This truly elegant piece is draped in sensual cotton velvet with brass accents and polished brass nails. It's difficult not to fall in love with these seductive and soft lines.



W. 49 cm 19.2" **D.** 54 cm 21.2" **H.** 80 cm 31.5"
SEAT H. 47 cm 18.5"

CENTURY COLLECTION

KELLY bar chair

Kelly bar chair dazzles in its smooth mustard velvet and long, elegant legs. The glossy black structure, finished with a delicate touch of gold, complements the polished brass nails that adorn the contours of the graceful backrest.



W. 52 cm 20.4" **D.** 52 cm 20.4" **H.** 109 cm 42.9"
SEAT H. 81 cm 31.9"

CENTURY COLLECTION





LUNA bar chair

An unusual majestic elegance surrounds the Luna bar chair. The slender and curved solid walnut legs with signature brass accents join the surprising and memorable wing-shaped backrest. The extreme comfort of the chair, although absorbing, leaves center stage to the seductive feminine lines of Luna.



W. 57 cm 22.4" **D.** 50 cm 19.6" **H.** 113 cm 44.4"
SEAT H. 81 cm 31.9"

CENTURY COLLECTION



LOUIS bar chair

With a gentle velvet and a contrasting golden cord, a classic design radiates from Louis bar chair's modern lines. The Louis bar chair rests on solid walnut legs with Ottiu's signature brass accents.



W. 52 cm 20.5" **D.** 52 cm 20.5" **H.** 108 cm 42.3"
SEAT H. 75 cm 29.5"

CENTURY COLLECTION





TIPPI bar chair

Our Tippi bar chair is not a discrete piece. Fresh, lively, breath-taking, it is the muse of the director. With a classic design but an audacious and bright cotton velvet and finishing touches in brass to further pump its exuberance, it will give any space a fresh and lively feel.



W. 50 cm 19.6" **D.** 57 cm 22.4" **H.** 110 cm 43.3"
SEAT H. 85 cm 33.5"

CENTURY COLLECTION

WINFREY bar chair

The Winfrey bar chair has a solid and strong feminine touch. Featuring upholstery in navy blue cotton velvet, this piece is embraced with a gold plated steel structure adding a special taste and synergy to any striking luxury interior project.



W. 58 cm 22.8" **D.** 47.5 cm 18.7" **H.** 91.5 cm 36"
SEAT H. 75 cm 29.5"

CENTURY COLLECTION

CHAPLIN armchair

The Chaplin armchair is a distinguished piece based on the British Chesterfield model. The vintage design, chosen for its undeniable nobility, is matched with a top-quality leather fabric with capitonné-style padding. Ottiu's touch is revealed on the silver leaf finish of its feet.



W. 126 cm 49.6" **D.** 100 cm 39.3" **H.** 75 cm 29.5"
SEAT H. 45 cm 17.7"

CENTURY COLLECTION



LOREN armchair

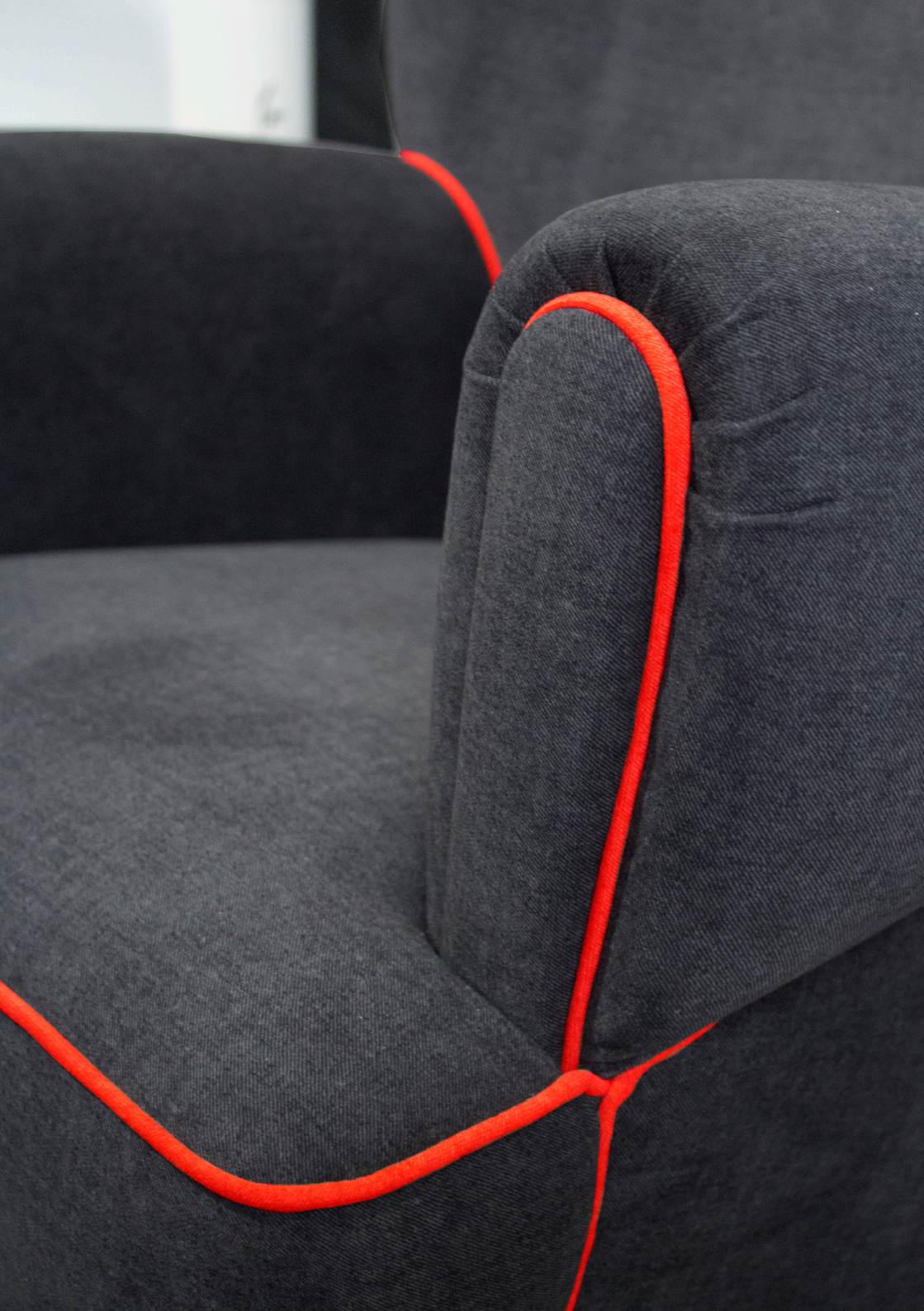
We revisit the timeless classic Loren armchair, a piece composed with subtle lines as well as a strong character. Its nickeled nails contrast with a high quality Byzantium velvet, and its tubular feet are finished with luxurious silver leaf.



W. 77 cm 30.3" **D.** 80 cm 31.4" **H.** 103 cm 40.5"
SEAT H. 43 cm 16.9"

CENTURY COLLECTION





GARLAND armchair

The dainty Garland armchair is wrapped in a soft honeysuckle velvet and a radiant golden cord. Finished with gold leaf, the cylindrical feet add an elegant touch to this contemporary piece.



W. 73 cm 28.7" **D.** 57 cm 22.4" **H.** 94 cm 37"
SEAT H. 43 cm 16.9"

ELLEN armchair

The ebony wood feet and luxurious upholstery pairing make the Ellen armchair a delicate and light piece. Designed for vintage and classical interiors, this piece fits perfectly a welcoming discrete environment.



W. 69 cm 27.3" **D.** 83 cm 32.6" **H.** 74 cm 29.1"
SEAT H. 45 cm 17.7"

CENTURY COLLECTION



LANSBURY armchair

With an updated chesterfield look, we are glad to present the timeless Lansbury armchair. With its gold leaf covered feet and gold plated nails, contrasting with a high-quality leather, Lansbury is awarded a tremendous touch of glamour that dignifies its own name.



W. 103 cm 40.5" **D.** 104 cm 40.9" **H.** 78 cm 30.7"
SEAT H. 45 cm 17.7"

CENTURY COLLECTION



KIM armchair

The Kim armchair has us spellbound by the lushness of its green velvet and walnut wood structure. Combined with its curvaceous yet decisive lines, we cannot help but to be immediately transported to the mesmerizing pictures of the great masters of film noir.



W. 68.5 cm 26.9" **D.** 72 cm 28.3" **H.** 81 cm 31.8"
SEAT H. 45 cm 17.7"

CENTURY COLLECTION





VISCONTI armchair

Combining opposites, such as decadence and lavish beauty, is a gift possessed only by the great masters of cinema, like the namesake of this chair. The Visconti armchair is given an unexpected and ethereal life by its ravishing shade of chocolate on the top of its walnut feet and brass accents.



W. 68 cm 26.7" **D.** 76 cm 29.9" **H.** 86 cm 33.8"
SEAT H. 45 cm 17.7"

GODARD armchair

In cinema, as in life, history is not made by those who never took any chances. The French Nouvelle Vague changed the status quo with its daring visuals and unorthodox storytelling. Inspired by such an iconic imagery, Ottiu brings you the eye-catching Godard armchair in metallic grey velvet over copper plated feet.



W. 70 cm 27.5" **D.** 57 cm 22.4" **H.** 94 cm 37"
SEAT H. 45 cm 17.7"

CENTURY COLLECTION



TIPPI armchair

Our Tippi armchair is not a discrete piece. Fresh, lively, breath-taking, it is the muse of the director. With a classic design but an audacious and bright cotton velvet and finishing touches in brass to further pump its exuberance, it will give any space a fresh and lively feel.



W. 76 cm 29.9" **D.** 85 cm 33.4" **H.** 75 cm 29.5"
SEAT H. 45 cm 17.7"

CENTURY COLLECTION



ELDRED armchair

The Eldred armchair is a mid century design star. This armchair, made with solid wood and upholstered to perfection, is a modern portrait of a classic. The typical lines of mid century modern will forever be elegant as long as there are tributes faithful to functionality and quality of the original works.



W. 69 cm 27.3" **D.** 75 cm 29.5" **H.** 78 cm 30.7"
SEAT H. 43 cm 16.9"

CENTURY COLLECTION



LOUIS armchair

With burgundy velvet and a contrasting golden piping, a classic design radiates from this chair's modern lines. The Louis Armchair rests on solid walnut legs with Ottiu's signature brass accents.



W. 72 cm 28.3" **D.** 70 cm 27.5" **H.** 90 cm 35.5"
SEAT H. 45 cm 17.7"

CENTURY COLLECTION



SCARLET armchair

Scarlet armchair is a perfect reflection of pure and greatest elegance. Drawing inspiration from gorgeous feather fans for burlesque, its eclectic and truly original back will give your spaces an entirely new character. Scarlet is draped in voluptuous brick coloured cotton velvet and glamorized with polished brass nails. Create your own moment of tension and excitement with this charming yet seductive armchair.



W. 72 cm 28.3" **D.** 80 cm 31.4" **H.** 86 cm 33.8"
SEAT H. 40 cm 15.7"

CENTURY COLLECTION



KELLY twin seat

Kelly twin seat dazzles in its smooth bordeaux velvet and long, elegant legs. The glossy black structure finished with a delicate touch of gold complements the polished brass nails adorning the contours of the gracious backrest.



W. 138 cm 54.3" **D.** 52 cm 20.5" **H.** 76.5 cm 30.1"
SEAT H. 47 cm 18.5"

CENTURY COLLECTION



LOREN chaise longue

Loren's distinctive but subtle lines are a revival of classic Italian upholstery style. A piece perfect for intimate moments, the Loren chaise longue exhibits the most charming persian blue velvet, with golden accents and gold leaf feet.



W. 112 cm 44" **D.** 51 cm 20" **H.** 40 cm 15.7"
SEAT H. 45 cm 17.7"

CHAPLIN sofa

The Chaplin sofa is a distinguished piece based on the British Chesterfield model. The vintage design, chosen for its undeniable nobility, is matched with a top-quality leather fabric with capitonné-style padding. Ottiu's touch is revealed on the silver leaf finish of its feet.



W. 223 cm 87.8" **D.** 100 cm 39.3" **H.** 75 cm 29.5"
SEAT H. 45 cm 17.7"

LANSBURY sofa

With an updated chesterfield look, we are glad to present the timeless Lansbury sofa. With its gold leaf covered feet and gold plated nails, contrasting with a high-quality leather, Lansbury is awarded a tremendous touch of glamour that dignifies its own name.



W. 227 cm 89.3" **D.** 104 cm 40.9" **H.** 78 cm 30.7"
SEAT H. 45 cm 17.7"



JEANE sofa

Sexy and opulent, Jeane sofa presents its ardent essence with enchanting design lines made with top quality velvet. Its ravishing top rests on polished brass feet, making this sofa a truly unique and grandiose piece.



W. 252 cm 99.2" **D.** 86 cm 33.6" **H.** 83 cm 32.6"
SEAT H. 45 cm 17.7"

CENTURY COLLECTION





SWANSON sofa

Imagined for the classic film sets, the Swanson sofa exudes rich and exotic contours, ideal for creating a feminine and luxurious ambiance. A piece that harmoniously joins the best of two design eras, the solid walnut feet are a feature inspired in the mid-century period, while the shapely upholstery, in cotton velvet marsala, is reminiscent of the great days of art deco.



W. 234 cm 92.1" **D.** 92 cm 36.2" **H.** 80 cm 31.5"
SEAT H. 45 cm 17.7"



MARGRET sofa

The Margret sofa was inspired by the strong, rich colors and voluptuous shapes that emerged during the 1950s. Featuring a show-stopping petrol velvet over polished brass feet, this sofa is guaranteed to bring old Hollywood glamour and grandeur to your living room.



W. 340 cm 133.8" **D.** 170 cm 66.9" **H.** 80 cm 31.5"
SEAT H. 45 cm 17.7"



HAYWORTH sofa

A feminine color, the mystique of the geometric shapes and the gracious touch of the gold plated feet characterize our dazzling Hayworth twin seat. Hayworth is once again inspired by the golden era of film noir and it is just as puzzling and captivating as the star that gives her name. The lavender velvet and legs in polished brass confer the final dramatic touches to this grand and imposing piece.



W. 150 cm 59" **D.** 75 cm 29.5" **H.** 73 cm 28.7"
SEAT H. 46 cm 18.1"

MURNAU sofa

The noir is a provocateur. Playing with our fear of the unknown and innermost desires, it heightens our senses in an experience so unforgettable that we keep coming back for more. A discrete piece at first sight, the Murnau sofa in a soft velvet and nickeled nails is destined to become one of your living room's standout pieces.



W. 180 cm 70.8" **D.** 100 cm 39.3" **H.** 80 cm 31.5"
SEAT H. 46 cm 18.1"

CENTURY COLLECTION



MARTINE sofa

Gracefully shaped in red satin over brass feet, our Martine Love Seat emerges as Ottiu's Bond girl, capable of tempting even the most well-trained and demanding observers.



W. 150 cm 59" **D.** 64 cm 25.1" **H.** 90 cm 35.5"
SEAT H. 45 cm 17.7"

CENTURY COLLECTION



DOROTHY sofa

The Dorothy sofa marks its presence with a graceful silhouette of well-detailed features. A variation of the original Jeane, Dorothy is lavishing in its sensuality but charismatic in personality. A touch of velvet is added to its feminine contours and luxurious finishings. A profound and luscious piece with a gentle nature, the Dorothy sofa is a sensible addition to your fabulous interiors.



W. 252 cm 99.2" **D.** 86 cm 33.6" **H.** 75 cm 29.5"
SEAT H. 45 cm 17.7"

